

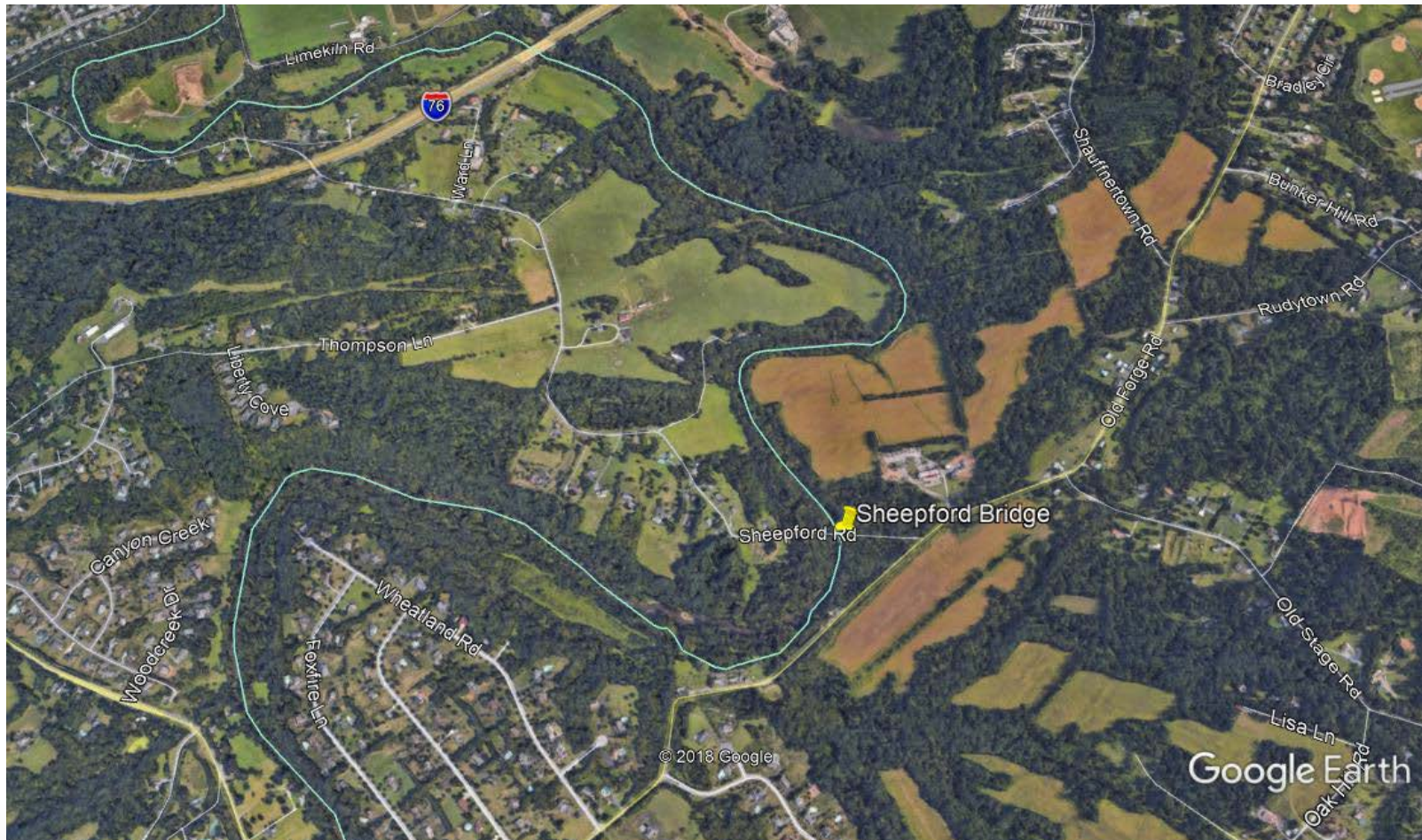
# Sheepford Bridge Closure

Presentation to Lower Allen Township Board of  
Commissioners

# Background

Sheepford Road Bridge Overview	
Location	Lower Allen Township, Cumberland County Fairview Township, York County
Feature Carried	Sheepford Road over Yellow Breeches
Year Built	1887
Length	114'
Spans	1
Bridge Type	Thru Truss
Weight Limit	3 tons
Design Status	Structurally deficient, functionally obsolete
Width	14'
AADT	302 (2016) 252 (2019)

# Background



# How Did We Get Here?

- Pre-2012 – Annual inspections revealed ongoing deterioration to structure
- 2012 – Repair made to stringers completed
- 2012-2016 – Ongoing inspections note ongoing deterioration to stringers and other parts of the bridge
- November 2016 – Public meeting conducted to discuss future of Slate Hill and Sheepford Bridges
- 2017 – Weight posting reduced to 3-tons on Sheepford Bridge due to advanced deterioration
- 2019 – Meetings with County Commissioners, Fairview Township staff and Lower Allen Township staff

# Input Received to Date

- Rehab the bridge
- Replace the bridge
- Close the bridge
- Keep it but don't increase the weight capacity to aid quality of life
- Preserve it for historic purposes
- Whatever is the most affordable/economical option





# Concerns

Concern	Comments
Mobility	4-mile detour if bridge closed, depending on destination
Flooding	Low under clearance of bridge renders it impassable between 10-50 year storm
Emergency Access	<ul style="list-style-type: none"><li>• Previous 5-ton weight posting and current 3-ton weight posting precludes emergency service vehicles.</li><li>• Primary responders on LAT side of bridge do not need to use bridge</li></ul>
Weight Posting	Improved only with full replacement option
Single Lane	Improved only with full replacement option
Fracture Critical Structure	Improved only with full replacement option
Cost Benefit	Major capital investment for limited transportation need

# Options

Option	Pro	Con	Estimated Cost
<b>Close bridge and provide cul-de-sacs</b>	<ul style="list-style-type: none"><li>• Eliminates need for future expenditures</li><li>• Decreases county bridge inventory</li></ul>	<ul style="list-style-type: none"><li>• Decreases mobility</li><li>• One point of access</li></ul>	\$200,000
<b>Rehabilitate Bridge</b>	<ul style="list-style-type: none"><li>• Preservation of oldest York County bridge</li><li>• Lower cost</li></ul>	<ul style="list-style-type: none"><li>• Remains single lane</li><li>• Weight restrictions</li><li>• On-going maintenance cost</li></ul>	\$1 million
<b>Replace Bridge</b>	<ul style="list-style-type: none"><li>• Permanent solution (more than 50 years)</li><li>• No restrictions for emergency services of any size</li><li>• Provides long term two points of access for county residents</li></ul>	<ul style="list-style-type: none"><li>• Most expensive solution</li><li>• Cost benefit low for 300 vehicles a day</li><li>• On-going maintenance</li></ul>	\$2 million

# Recommendation

- Close Sheepford Bridge when its condition warrants
- Construct cul de sac on Lower Allen Township side
- Close approach on Fairview Township side
- Install dry-hydrant at end of cul de sac if water depth is appropriate
- LAT may consider pedestrian bridge in the future
- Market existing bridge to potential new owners



# Next Steps

- Summarize input
- Present municipal input to County Commissioners (Cumberland and York)
- County Commissioners jointly make final decision on future of bridge